

Low Voltage Track System Module ML26-RS40-8W-930-18



| | | |
|---------------------|---------|--------------------------|
| Light Output Ratio: | 100.0% | |
| Luminaire Power: | 8.016 W | |
| SHR Nominal: | 0.00 | Calculated using the TM5 |
| SHR Maximum: | 1.00 | fine grid method. |

C Range: 0 - 360DEG
C Interval: 15.0DEG
Test Speed: HIGH
Temperature: 25.3DEG
Operators: Jason Long
Test Date: 2019-12-06

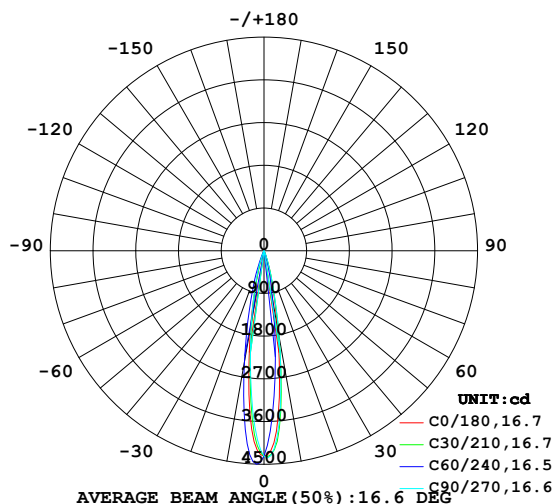
γ Range: 0 - 90DEG
γ Interval: 1.0DEG
Test System: EVERFINE GO-2000B_V1 SYSTEM V2.0.362
Humidity: 56%
Test Distance: 5.850m [K=1.0000]
Remarks:

LUMINAIRE PHOTOMETRIC TEST REPORT

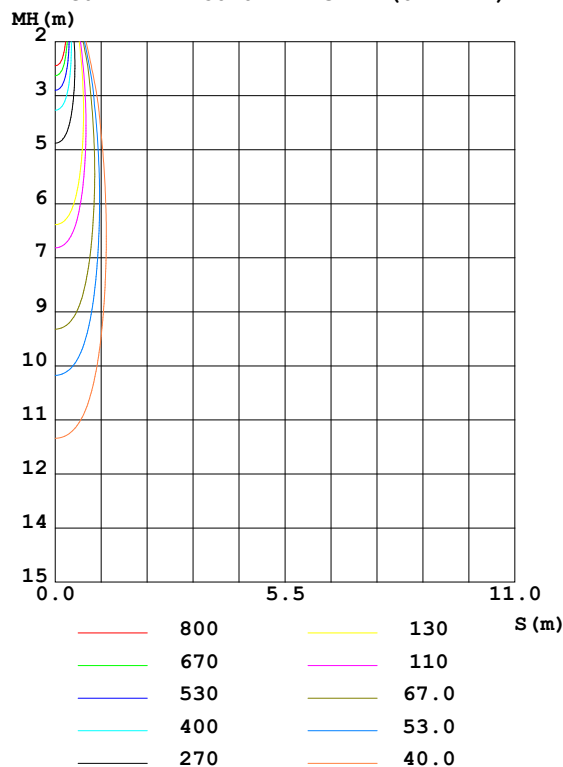
| | | |
|---|--------------------------------------|--|
| Test:U:48.00V I:0.1670A P:8.016W PF:1.000 Freq:0Hz Lamp Flux:574.358x1 lm | | |
| NAME: ML26-RS40-8W-930-18 | TYPE:Low Voltage Track System Module | |
| SPEC.:3000K | DIM.: ϕ 40mm*H70mm | |
| MFR.: NEKO LIGHTING AG | | |

| DATA OF LAMP | | PHOTOMETRIC DATA Eff: 71.65 lm/W | | | |
|-------------------|---------------|----------------------------------|--------|-------------------------|----------|
| MODEL | CITIZEN-3000K | I _{max} (cd) | 6263 | S/MH (C0/180) | 0.29 |
| NOMINAL POWER (W) | 8 | LOR (%) | 100.0 | S/MH (C90/270) | 0.26 |
| RATED VOLTAGE (V) | 48 | TOTAL FLUX (lm) | 574.36 | η UP,DN (C0-180) | 0.0,62.3 |
| NOMINAL FLUX (lm) | 574.358 | CIE CLASS | DIRECT | η UP,DN (C180-360) | 0.0,37.7 |
| LAMPS INSIDE | 1 | η up (%) | 0.0 | CIBSE SHR NOM | 0.00 |
| TEST VOLTAGE (V) | 48 | η down (%) | 100.0 | CIBSE SHR MAX | 1.00 |

LUMINOUS INTENSITY DISTRIBUTION DIAGRAM



C0 PLANE ISOLUX DIAGRAM (UNIT:lx)



C Range: 0 - 360DEG
C Interval: 15.0DEG
Test Speed: HIGH
Temperature:25.3DEG
Operators:Jason Long
Test Date:2019-12-06

γ Range: 0 - 90DEG
 γ Interval: 1.0DEG
Test System:EVERFINE GO-2000B_V1 SYSTEM V2.0.362
Humidity:56%
Test Distance:5.850m [K=1.0000]
Remarks:

ZONAL FLUX DIAGRAM

ZONAL FLUX DIAGRAM:

| γ | C0 | C45 | C90 | C135 | C180 | C225 | C270 | C315 | γ | Φ zone | Φ total | %lum, lamp |
|----------|-----------------------|--------|--------|--------|--------|--------|--------|--------|----------|-------------|--------------|------------|
| 10 | 1635 | 1039 | 1840 | 4625 | 1617 | 2377 | 1547 | 795.1 | 0- 10 | 287.1 | 287.1 | 50,50 |
| 20 | 166.9 | 85.24 | 191.2 | 679.7 | 158.5 | 370.0 | 201.4 | 66.04 | 10- 20 | 237.8 | 525.0 | 91.4,91.4 |
| 30 | 16.58 | 12.73 | 22.68 | 51.82 | 13.99 | 26.15 | 18.00 | 9.229 | 20- 30 | 40.97 | 565.9 | 98.5,98.5 |
| 40 | 2.635 | 2.124 | 5.144 | 9.539 | 2.532 | 5.007 | 3.175 | 1.497 | 30- 40 | 6.468 | 572.4 | 99.7,99.7 |
| 50 | 0.5189 | 0.4492 | 0.8053 | 1.738 | 0.5867 | 0.8543 | 0.6484 | 0.3661 | 40- 50 | 1.447 | 573.8 | 99.9,99.9 |
| 60 | 0.1120 | 0.0745 | 0.2026 | 0.4626 | 0.1524 | 0.2524 | 0.1472 | 0.0802 | 50- 60 | 0.3700 | 574.2 | 100,100 |
| 70 | 0.0338 | 0.0161 | 0.0595 | 0.0950 | 0.0319 | 0.0707 | 0.0356 | 0.0276 | 60- 70 | 0.0996 | 574.3 | 100,100 |
| 80 | 0.0177 | 0.0141 | 0.0262 | 0.0275 | 0.0071 | 0.0242 | 0.0095 | 0.0150 | 70- 80 | 0.0307 | 574.3 | 100,100 |
| 90 | 0.0124 | 0.0141 | 0.0143 | 0.0175 | 0.0071 | 0.0101 | 0.0095 | 0.0100 | 80- 90 | 0.0155 | 574.4 | 100,100 |
| 100 | | | | | | | | | 90-100 | | | |
| 110 | | | | | | | | | 100-110 | | | |
| 120 | | | | | | | | | 110-120 | | | |
| 130 | | | | | | | | | 120-130 | | | |
| 140 | | | | | | | | | 130-140 | | | |
| 150 | | | | | | | | | 140-150 | | | |
| 160 | | | | | | | | | 150-160 | | | |
| 170 | | | | | | | | | 160-170 | | | |
| 180 | | | | | | | | | 170-180 | | | |
| DEG | LUMINOUS INTENSITY:cd | | | | | | | | | UNIT:lm | | |

Conical surface Flux(90deg): 573.38 lm

%lum = 99.8%

%lamp = 99.8%

Conical surface Flux(120deg): 574.21 lm

%lum = 100.0%

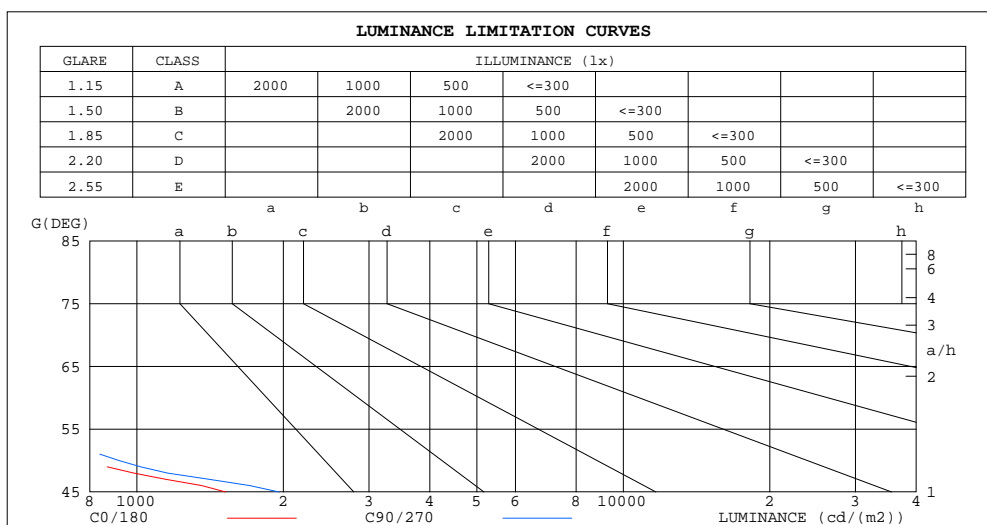
%lamp = 100.0%

C Range: 0 - 360DEG
C Interval: 15.0DEG
Test Speed: HIGH
Temperature:25.3DEG
Operators:Jason Long
Test Date:2019-12-06

γ Range: 0 - 90DEG
 γ Interval: 1.0DEG
Test System:EVERFINE GO-2000B_V1 SYSTEM V2.0.362
Humidity:56%
Test Distance:5.850m [K=1.0000]
Remarks:

LUMINANCE LIMITATION CURVES

| | | |
|---|--------------------------------------|--|
| Test:U:48.00V I:0.1670A P:8.016W PF:1.000 Freq:0Hz Lamp Flux:574.358x1 lm | | |
| NAME: ML26-RS40-8W-930-18 | TYPE:Low Voltage Track System Module | |
| SPEC.:3000K | DIM.: ϕ 40mm*H70mm | |
| MFR.: NEKO LIGHTING AG | | |



| LUMINANCE cd/(m2) | | |
|-------------------|--------|---------|
| G(DEG) | C0/180 | C90/270 |
| 85 | 160 | 160 |
| 80 | 100 | 110 |
| 75 | 94 | 114 |
| 70 | 97 | 127 |
| 65 | 124 | 177 |
| 60 | 220 | 296 |
| 55 | 459 | 568 |
| 50 | 792 | 917 |
| 45 | 1522 | 1959 |

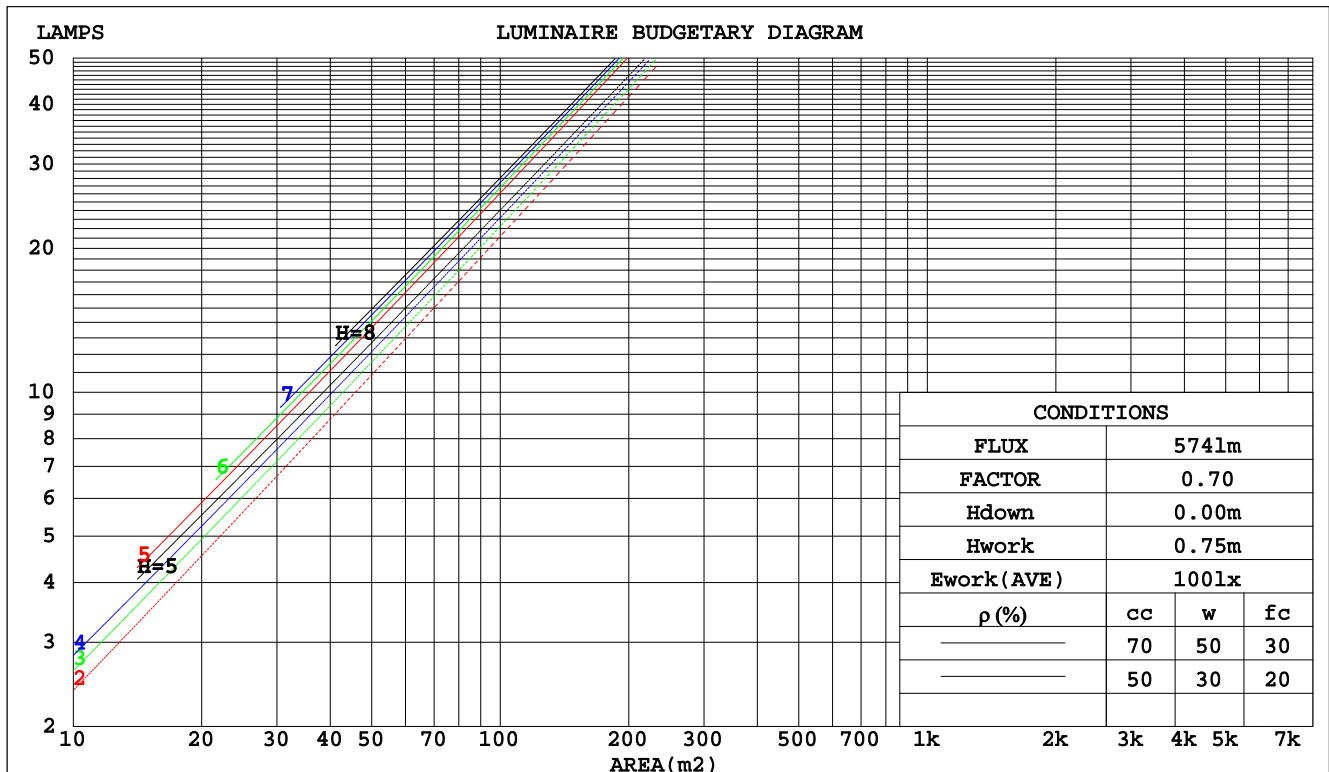
C Range: 0 - 360DEG
C Interval: 15.0DEG
Test Speed: HIGH
Temperature:25.3DEG
Operators:Jason Long
Test Date:2019-12-06

γ Range: 0 - 90DEG
 γ Interval: 1.0DEG
Test System:EVERFINE GO-2000B_V1 SYSTEM V2.0.362
Humidity:56%
Test Distance:5.850m [K=1.0000]
Remarks:

CU AND LUMINAIRE BUDGETARY ESTIMATE DIAGRAM

| | | |
|---|---|--|
| Test:U:48.00V I:0.1670A P:8.016W PF:1.000 Freq:0Hz Lamp Flux:574.358x1 lm | | |
| NAME: ML26-RS40-8W-930-18 | TYPE:Low Voltage Track System Module | |
| SPEC.:3000K | DIM.: $\phi 40\text{mm} \times \text{H}70\text{mm}$ | |
| MFR.: NEKO LIGHTING AG | | |

| ρ_{cc} | 80% | | | 70% | | | 50% | | | 30% | | | 10% | | | 0 |
|-------------|-----------------------|------|------|------|------|------|---------------------------------|------|------|------|------|------|------|------|------|------|
| ρ_w | 50% | 30% | 10% | 50% | 30% | 10% | 50% | 30% | 10% | 50% | 30% | 10% | 50% | 30% | 10% | 0 |
| ρ_{fc} | 20% | | | 20% | | | 20% | | | 20% | | | 20% | | | 0 |
| RCR | RCR:Room Cavity Ratio | | | | | | Coefficients of Utilization(CU) | | | | | | | | | |
| 0.0 | 1.19 | 1.19 | 1.19 | 1.16 | 1.16 | 1.16 | 1.11 | 1.11 | 1.11 | 1.06 | 1.06 | 1.06 | 1.02 | 1.02 | 1.02 | 1.00 |
| 1.0 | 1.14 | 1.12 | 1.10 | 1.12 | 1.10 | 1.09 | 1.08 | 1.06 | 1.05 | 1.04 | 1.03 | 1.02 | 1.01 | .00 | .99 | .98 |
| 2.0 | 1.09 | 1.07 | 1.04 | 1.08 | 1.05 | 1.03 | 1.04 | 1.03 | 1.01 | 1.02 | 1.00 | .99 | .99 | .98 | .97 | .95 |
| 3.0 | 1.05 | 1.02 | .00 | 1.04 | 1.01 | .99 | 1.02 | .99 | .97 | .99 | .98 | .96 | .97 | .96 | .95 | .93 |
| 4.0 | 1.02 | .99 | .96 | 1.01 | .98 | .96 | .99 | .97 | .95 | .97 | .95 | .94 | .96 | .94 | .93 | .91 |
| 5.0 | .99 | .96 | .93 | .98 | .95 | .93 | .97 | .94 | .92 | .95 | .93 | .91 | .94 | .92 | .91 | .90 |
| 6.0 | .97 | .93 | .91 | .96 | .93 | .90 | .95 | .92 | .90 | .94 | .91 | .89 | .93 | .90 | .89 | .88 |
| 7.0 | .94 | .91 | .88 | .94 | .91 | .88 | .93 | .90 | .88 | .92 | .89 | .87 | .91 | .89 | .87 | .86 |
| 8.0 | .92 | .89 | .86 | .92 | .89 | .86 | .91 | .88 | .86 | .90 | .88 | .86 | .89 | .87 | .85 | .85 |
| 9.0 | .90 | .87 | .85 | .90 | .87 | .84 | .89 | .86 | .84 | .89 | .86 | .84 | .88 | .86 | .84 | .83 |
| 10.0 | .89 | .85 | .83 | .88 | .85 | .83 | .88 | .85 | .83 | .87 | .84 | .83 | .86 | .84 | .82 | .82 |



C Range: 0 - 360DEG
C Interval: 15.0DEG
Test Speed: HIGH
Temperature:25.3DEG
Operators:Jason Long
Test Date:2019-12-06

γ Range: 0 - 90DEG
 γ Interval: 1.0DEG
Test System:EVERFINE GO-2000B_V1 SYSTEM V2.0.362
Humidity:56%
Test Distance:5.850m [K=1.0000]
Remarks:

WEC AND CCEC

| | | |
|---|--------------------------------------|--|
| Test:U:48.00V I:0.1670A P:8.016W PF:1.000 Freq:0Hz Lamp Flux:574.358x1 lm | | |
| NAME: ML26-RS40-8W-930-18 | TYPE:Low Voltage Track System Module | |
| SPEC.:3000K | DIM.: ϕ 40mm*H70mm | |
| MFR.: NEKO LIGHTING AG | | |

| ρ_{cc} | 80% | | | 70% | | | 50% | | | 30% | | | 10% | | | 0 | |
|-------------|-----------------------|------|------|------|------|------|---------------------------------|------|------|------|------|------|------|------|------|---|--|
| ρ_w | 50% | 30% | 10% | 50% | 30% | 10% | 50% | 30% | 10% | 50% | 30% | 10% | 50% | 30% | 10% | 0 | |
| ρ_{fc} | 20% | | | 20% | | | 20% | | | 20% | | | 20% | | | 0 | |
| RCR | RCR:Room Cavity Ratio | | | | | | Wall Exitance Coefficients(WEC) | | | | | | | | | | |
| 0.0 | | | | | | | | | | | | | | | | | |
| 1.0 | .122 | .070 | .022 | .116 | .066 | .021 | .103 | .059 | .019 | .092 | .053 | .017 | .082 | .047 | .015 | | |
| 2.0 | .112 | .061 | .019 | .106 | .059 | .018 | .096 | .054 | .017 | .087 | .049 | .015 | .078 | .044 | .014 | | |
| 3.0 | .103 | .055 | .016 | .099 | .053 | .016 | .090 | .049 | .015 | .083 | .045 | .014 | .075 | .042 | .013 | | |
| 4.0 | .096 | .050 | .015 | .092 | .048 | .014 | .085 | .045 | .013 | .079 | .042 | .013 | .073 | .039 | .012 | | |
| 5.0 | .089 | .046 | .013 | .086 | .044 | .013 | .080 | .042 | .012 | .075 | .040 | .012 | .070 | .037 | .011 | | |
| 6.0 | .084 | .042 | .012 | .081 | .041 | .012 | .076 | .039 | .011 | .072 | .037 | .011 | .067 | .035 | .011 | | |
| 7.0 | .079 | .039 | .011 | .077 | .038 | .011 | .073 | .037 | .011 | .069 | .035 | .010 | .065 | .034 | .010 | | |
| 8.0 | .075 | .037 | .010 | .073 | .036 | .010 | .070 | .035 | .010 | .066 | .033 | .010 | .063 | .032 | .009 | | |
| 9.0 | .072 | .035 | .010 | .070 | .034 | .010 | .067 | .033 | .009 | .064 | .032 | .009 | .061 | .031 | .009 | | |
| 10.0 | .068 | .033 | .009 | .067 | .032 | .009 | .064 | .031 | .009 | .061 | .030 | .009 | .059 | .030 | .008 | | |

| ρ_{cc} | 80% | | | 70% | | | 50% | | | 30% | | | 10% | | | 0 |
|-------------|-----------------------|------|------|------|------|------|--|------|------|------|------|------|------|------|------|---|
| ρ_w | 50% | 30% | 10% | 50% | 30% | 10% | 50% | 30% | 10% | 50% | 30% | 10% | 50% | 30% | 10% | 0 |
| ρ_{fc} | 20% | | | 20% | | | 20% | | | 20% | | | 20% | | | 0 |
| RCR | RCR:Room Cavity Ratio | | | | | | Ceiling Cavity Exitance Coefficients(CCEC) | | | | | | | | | |
| 0.0 | .190 | .190 | .190 | .163 | .163 | .163 | .111 | .111 | .111 | .064 | .064 | .064 | .020 | .020 | .020 | |
| 1.0 | .167 | .158 | .149 | .143 | .135 | .128 | .098 | .093 | .089 | .056 | .054 | .052 | .018 | .017 | .017 | |
| 2.0 | .148 | .133 | .120 | .127 | .114 | .104 | .087 | .079 | .072 | .050 | .046 | .042 | .016 | .015 | .014 | |
| 3.0 | .132 | .113 | .098 | .113 | .098 | .085 | .078 | .068 | .060 | .045 | .040 | .035 | .014 | .013 | .011 | |
| 4.0 | .119 | .098 | .081 | .102 | .084 | .071 | .070 | .059 | .050 | .041 | .034 | .029 | .013 | .011 | .010 | |
| 5.0 | .108 | .085 | .068 | .093 | .074 | .059 | .064 | .051 | .042 | .037 | .030 | .025 | .012 | .010 | .008 | |
| 6.0 | .098 | .075 | .058 | .085 | .065 | .050 | .058 | .045 | .036 | .034 | .027 | .021 | .011 | .009 | .007 | |
| 7.0 | .090 | .066 | .049 | .078 | .057 | .043 | .054 | .040 | .031 | .031 | .024 | .018 | .010 | .008 | .006 | |
| 8.0 | .083 | .059 | .043 | .072 | .051 | .037 | .050 | .036 | .026 | .029 | .021 | .016 | .009 | .007 | .005 | |
| 9.0 | .078 | .053 | .037 | .067 | .046 | .033 | .046 | .033 | .023 | .027 | .019 | .014 | .009 | .006 | .005 | |
| 10.0 | .072 | .049 | .033 | .062 | .042 | .029 | .043 | .030 | .020 | .025 | .018 | .012 | .008 | .006 | .004 | |

C Range: 0 - 360DEG
C Interval: 15.0DEG
Test Speed: HIGH
Temperature:25.3DEG
Operators:Jason Long
Test Date:2019-12-06

γ Range: 0 - 90DEG
 γ Interval: 1.0DEG
Test System:EVERFINE GO-2000B_V1 SYSTEM V2.0.362
Humidity:56%
Test Distance:5.850m [K=1.0000]
Remarks:

UGR(Unified Glare Rating) Table

| | | | | | | | | | | |
|---|------------------|-----|-----|-----|--------------------------------------|----------------|-----|-----|-----|-----|
| Test:U:48.00V I:0.1670A P:8.016W PF:1.000 Freq:0Hz Lamp Flux:574.358x1 lm | | | | | | | | | | |
| NAME: ML26-RS40-8W-930-18 | | | | | TYPE:Low Voltage Track System Module | | | | | |
| SPEC.:3000K | | | | | DIM.: ϕ 40mm*H70mm | | | | | |
| MFR.: NEKO LIGHTING AG | | | | | | | | | | |
| ceiling/cavity | 0.7 | 0.7 | 0.5 | 0.5 | 0.3 | 0.7 | 0.7 | 0.5 | 0.5 | 0.3 |
| walls | 0.5 | 0.3 | 0.5 | 0.3 | 0.3 | 0.5 | 0.3 | 0.5 | 0.3 | 0.3 |
| working plane | 0.2 | 0.2 | 0.2 | 0.2 | 0.2 | 0.2 | 0.2 | 0.2 | 0.2 | 0.2 |
| Room dimensions | Viewed crosswise | | | | | Viewed endwise | | | | |
| x = 2H y = 2H | 2.9 | 3.4 | 3.1 | 3.6 | 3.7 | 1.9 | 2.4 | 2.1 | 2.6 | 2.7 |
| 3H | 2.8 | 3.3 | 3.0 | 3.4 | 3.6 | 1.8 | 2.3 | 2.0 | 2.5 | 2.6 |
| 4H | 2.7 | 3.2 | 2.9 | 3.4 | 3.6 | 1.7 | 2.2 | 1.9 | 2.4 | 2.6 |
| 6H | 2.6 | 3.1 | 2.9 | 3.3 | 3.5 | 1.6 | 2.1 | 1.9 | 2.3 | 2.5 |
| 8H | 2.6 | 3.0 | 2.8 | 3.2 | 3.5 | 1.6 | 2.0 | 1.9 | 2.3 | 2.5 |
| 12H | 2.5 | 3.0 | 2.8 | 3.2 | 3.5 | 1.5 | 2.0 | 1.8 | 2.2 | 2.5 |
| 4H 2H | 2.7 | 3.2 | 2.9 | 3.4 | 3.6 | 1.7 | 2.2 | 1.9 | 2.4 | 2.6 |
| 3H | 2.5 | 3.0 | 2.8 | 3.2 | 3.5 | 1.5 | 2.0 | 1.8 | 2.2 | 2.5 |
| 4H | 2.4 | 2.8 | 2.7 | 3.1 | 3.4 | 1.4 | 1.8 | 1.8 | 2.1 | 2.4 |
| 6H | 2.3 | 2.7 | 2.7 | 3.0 | 3.3 | 1.3 | 1.7 | 1.7 | 2.0 | 2.4 |
| 8H | 2.3 | 2.6 | 2.6 | 2.9 | 3.3 | 1.3 | 1.6 | 1.7 | 2.0 | 2.3 |
| 12H | 2.2 | 2.5 | 2.6 | 2.9 | 3.3 | 1.2 | 1.6 | 1.6 | 1.9 | 2.3 |
| 8H 4H | 2.3 | 2.6 | 2.6 | 2.9 | 3.3 | 1.3 | 1.6 | 1.7 | 2.0 | 2.3 |
| 6H | 2.1 | 2.4 | 2.6 | 2.8 | 3.2 | 1.2 | 1.5 | 1.6 | 1.8 | 2.3 |
| 8H | 2.1 | 2.3 | 2.5 | 2.8 | 3.2 | 1.1 | 1.4 | 1.6 | 1.8 | 2.2 |
| 12H | 2.0 | 2.2 | 2.5 | 2.7 | 3.2 | 1.1 | 1.3 | 1.5 | 1.7 | 2.2 |
| 12H 4H | 2.2 | 2.5 | 2.6 | 2.9 | 3.3 | 1.2 | 1.5 | 1.6 | 1.9 | 2.3 |
| 6H | 2.1 | 2.3 | 2.5 | 2.7 | 3.2 | 1.1 | 1.4 | 1.6 | 1.8 | 2.2 |
| 8H | 2.0 | 2.2 | 2.5 | 2.7 | 3.1 | 1.1 | 1.3 | 1.5 | 1.7 | 2.2 |
| Variations with the observer position at spacings: | | | | | | | | | | |
| S = 1.0H | + 2.9 / -10.5 | | | | | + 4.4 / -11.3 | | | | |
| 1.5H | + 5.0 / - 7.3 | | | | | + 6.6 / -10.3 | | | | |
| 2.0H | + 5.6 / - 7.1 | | | | | + 7.0 / - 7.9 | | | | |

CIE Pub.117, 574.4 lm Total Lamp Luminous Flux Correct ($8\log(F/F_0) = -1.9$)

C Range: 0 - 360DEG
C Interval: 15.0DEG
Test Speed: HIGH
Temperature:25.3DEG
Operators:Jason Long
Test Date:2019-12-06

γ Range: 0 - 90DEG
 γ Interval: 1.0DEG
Test System:EVERFINE GO-2000B_V1 SYSTEM V2.0.362
Humidity:56%
Test Distance:5.850m [K=1.0000]
Remarks:

UTILIZATION FACTORS TABLE

| | | |
|---|--------------------------------------|--|
| Test:U:48.00V I:0.1670A P:8.016W PF:1.000 Freq:0Hz Lamp Flux:574.358x1 lm | | |
| NAME: ML26-RS40-8W-930-18 | TYPE:Low Voltage Track System Module | |
| SPEC.:3000K | DIM.: ϕ 40mm*H70mm | |
| MFR.: NEKO LIGHTING AG | | |

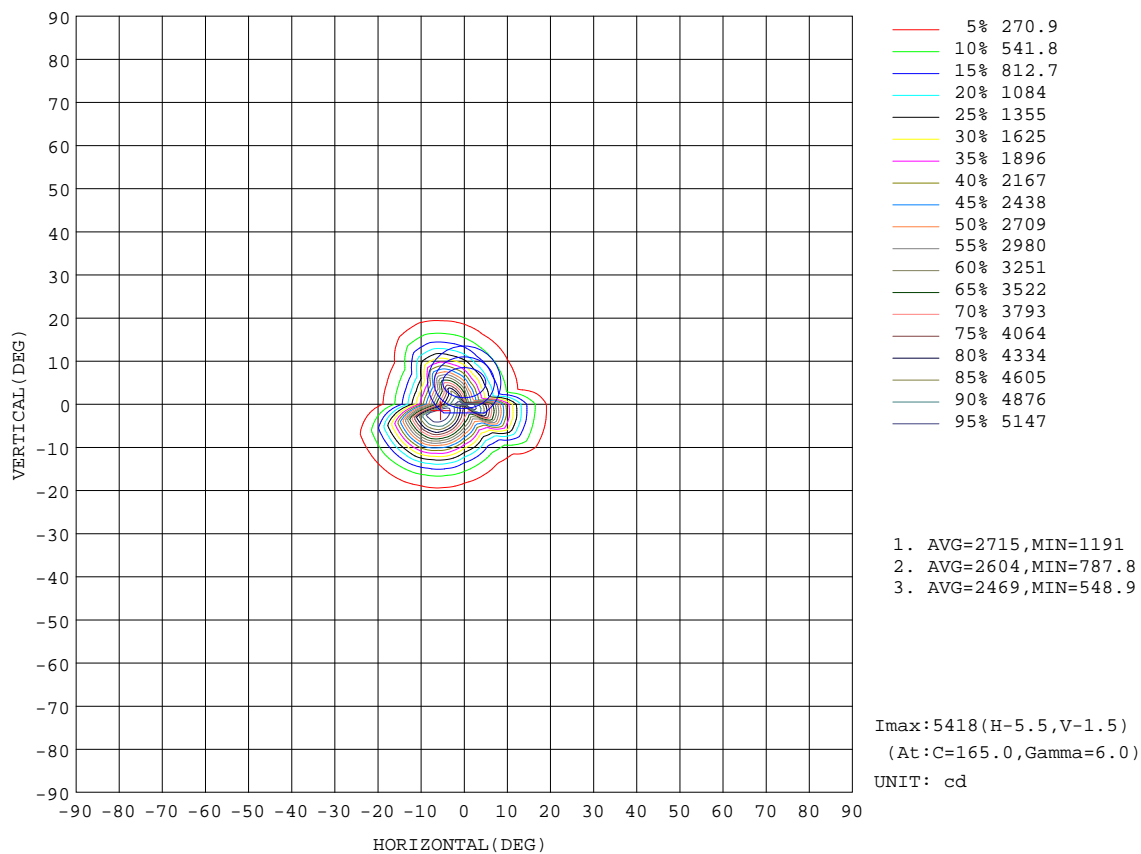
| REFLECTANCE | | | | | | | | | | |
|----------------------------------|---|-----|-----------|-----|-----|-----|-----|---------------|-----|--------|
| Ceiling | 0.8 | 0.8 | 0.8 | 0.7 | 0.7 | 0.7 | 0.5 | 0.5 | 0.5 | 0 |
| Walls | 0.7 | 0.5 | 0.3 | 0.7 | 0.5 | 0.3 | 0.7 | 0.5 | 0.3 | 0 |
| Working plane | 0.2 | 0.2 | 0.2 | 0.2 | 0.2 | 0.2 | 0.2 | 0.2 | 0.2 | 0 |
| ROOM INDEX | UTILIZATION FACTORS(PERCENT) $k(RI) \times RCR = 5$ | | | | | | | | | |
| k = 0.60 | 91 | 86 | 82 | 91 | 86 | 82 | 90 | 85 | 82 | 79 |
| 0.80 | 98 | 93 | 90 | 98 | 93 | 90 | 97 | 92 | 89 | 86 |
| 1.00 | 102 | 97 | 94 | 101 | 97 | 94 | 100 | 96 | 93 | 89 |
| 1.25 | 105 | 101 | 98 | 104 | 100 | 97 | 103 | 99 | 97 | 93 |
| 1.50 | 108 | 104 | 101 | 107 | 103 | 100 | 105 | 101 | 99 | 95 |
| 2.00 | 110 | 106 | 103 | 109 | 105 | 103 | 106 | 103 | 101 | 96 |
| 2.50 | 111 | 108 | 105 | 110 | 107 | 104 | 107 | 104 | 103 | 97 |
| 3.00 | 113 | 110 | 107 | 111 | 108 | 106 | 108 | 106 | 104 | 98 |
| 4.00 | 115 | 112 | 110 | 113 | 111 | 109 | 109 | 107 | 106 | 99 |
| 5.00 | 116 | 114 | 112 | 114 | 112 | 111 | 110 | 109 | 108 | 100 |
| ROOM INDEX | UF(total) | | | | | | | | | Direct |
| According to DIN EN 13032-2 2004 | | | Suspended | | | | | SHRNOM = 1.25 | | |

C Range: 0 - 360DEG
C Interval: 15.0DEG
Test Speed: HIGH
Temperature:25.3DEG
Operators:Jason Long
Test Date:2019-12-06

γ Range: 0 - 90DEG
 γ Interval: 1.0DEG
Test System:EVERFINE GO-2000B_V1 SYSTEM V2.0.362
Humidity:56%
Test Distance:5.850m [K=1.0000]
Remarks:

ISOCANDELA DIAGRAM

| | | |
|---|--------------------------------------|--|
| Test:U:48.00V I:0.1670A P:8.016W PF:1.000 Freq:0Hz Lamp Flux:574.358x1 lm | | |
| NAME: ML26-RS40-8W-930-18 | TYPE:Low Voltage Track System Module | |
| SPEC.:3000K | DIM.: ϕ 40mm*H70mm | |
| MFR.: NEKO LIGHTING AG | | |



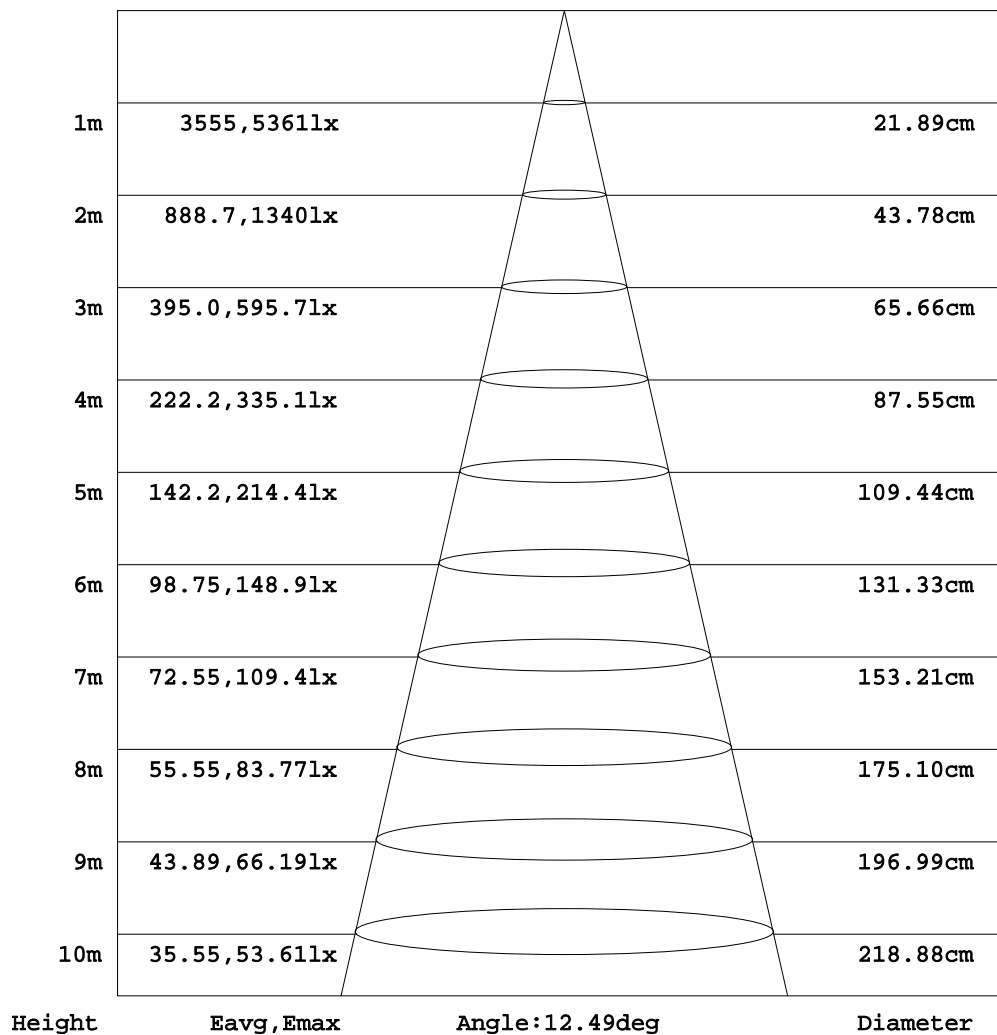
C Range: 0 - 360DEG
C Interval: 15.0DEG
Test Speed: HIGH
Temperature:25.3DEG
Operators:Jason Long
Test Date:2019-12-06

γ Range: 0 - 90DEG
 γ Interval: 1.0DEG
Test System:EVERFINE GO-2000B_V1 SYSTEM V2.0.362
Humidity:56%
Test Distance:5.850m [K=1.0000]
Remarks:

AAI Figure

| | | |
|---|---|--|
| Test:U:48.00V I:0.1670A P:8.016W PF:1.000 Freq:0Hz Lamp Flux:574.358x1 lm | | |
| NAME: ML26-RS40-8W-930-18 | TYPE:Low Voltage Track System Module | |
| SPEC.:3000K | DIM.: $\phi 40\text{mm} \times \text{H}70\text{mm}$ | |
| MFR.: NEKO LIGHTING AG | | |

Flux out:168.4 lm



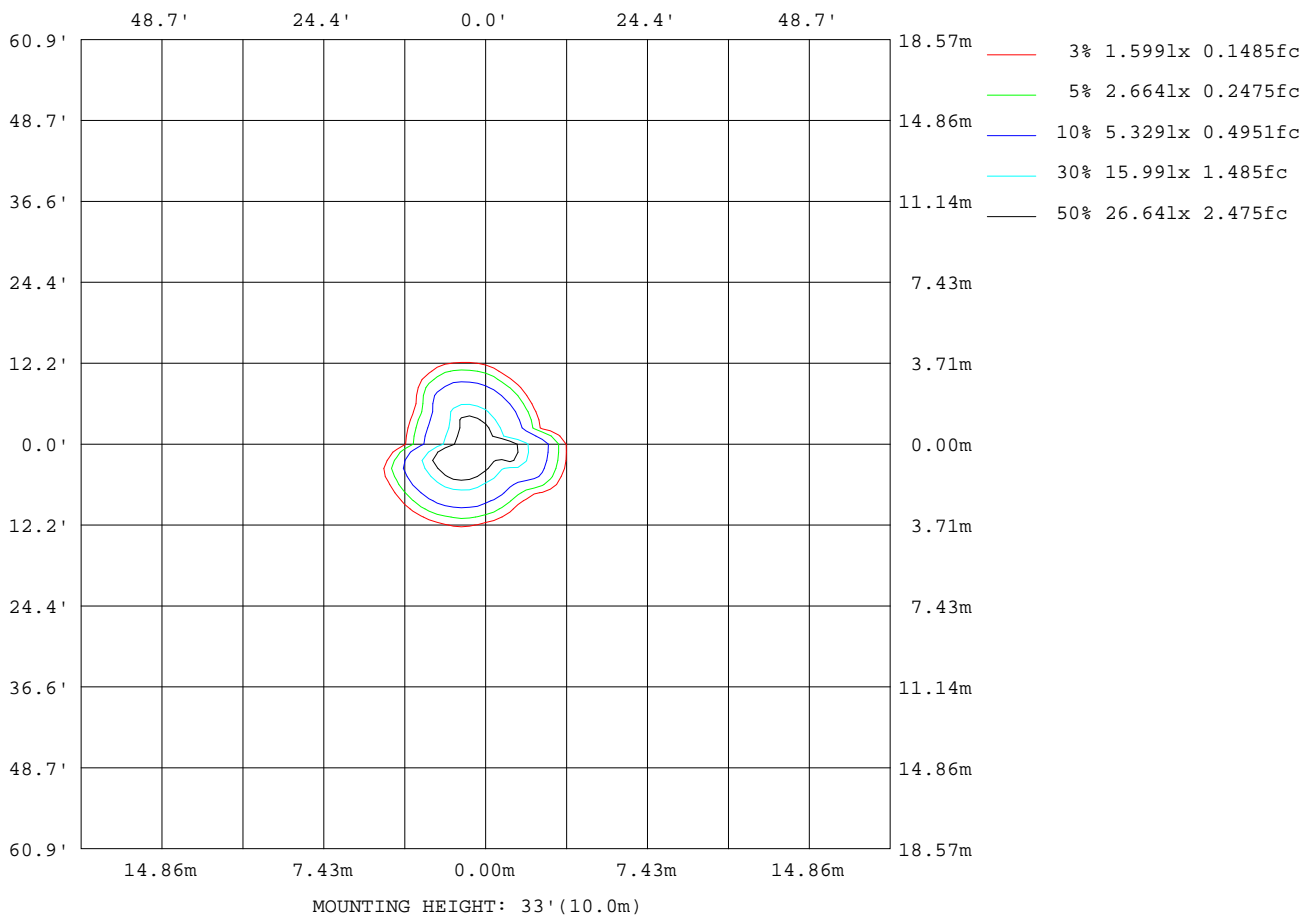
Note:The Curves indicate the illuminated area and the average illumination when the luminaire is at different distance.

C Range: 0 - 360DEG
C Interval: 15.0DEG
Test Speed: HIGH
Temperature:25.3DEG
Operators:Jason Long
Test Date:2019-12-06

γ Range: 0 - 90DEG
 γ Interval: 1.0DEG
Test System:EVERFINE GO-2000B_V1 SYSTEM V2.0.362
Humidity:56%
Test Distance:5.850m [K=1.0000]
Remarks:

ISOLUX DIAGRAM

| | | |
|---|--------------------------------------|--|
| Test:U:48.00V I:0.1670A P:8.016W PF:1.000 Freq:0Hz Lamp Flux:574.358x1 lm | | |
| NAME: ML26-RS40-8W-930-18 | TYPE:Low Voltage Track System Module | |
| SPEC.:3000K | DIM.: ϕ 40mm*H70mm | |
| MFR.: NEKO LIGHTING AG | | |



C Range: 0 - 360DEG
C Interval: 15.0DEG
Test Speed: HIGH
Temperature:25.3DEG
Operators:Jason Long
Test Date:2019-12-06

γ Range: 0 - 90DEG
 γ Interval: 1.0DEG
Test System:EVERFINE GO-2000B_V1 SYSTEM V2.0.362
Humidity:56%
Test Distance:5.850m [K=1.0000]
Remarks:

LED Avg.L Report

| | | |
|---|--------------------------------------|--|
| Test:U:48.00V I:0.1670A P:8.016W PF:1.000 Freq:0Hz Lamp Flux:574.358x1 lm | | |
| NAME: ML26-RS40-8W-930-18 | TYPE:Low Voltage Track System Module | |
| SPEC.:3000K | DIM.: ϕ 40mm*H70mm | |
| MFR.: NEKO LIGHTING AG | | |

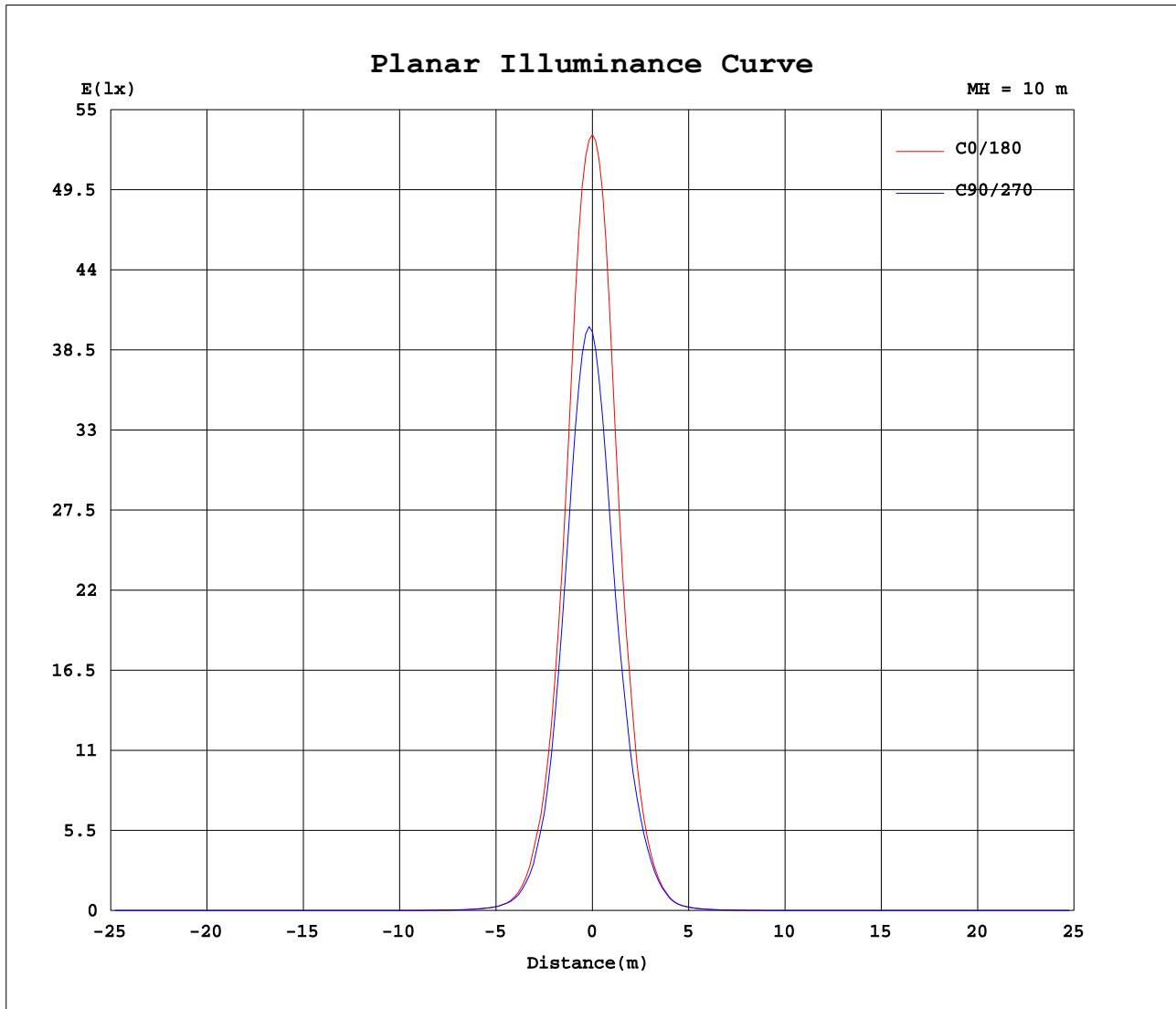
| AvgL | cd/m2 |
|------------------|-------|
| L_0~180 (65) av | 115 |
| L_0~180 (75) av | 57 |
| L_0~180 (85) av | 97 |
| L_90~270 (65) av | 159 |
| L_90~270 (75) av | 77 |
| L_90~270 (85) av | 131 |
| L_45 (65) av | 196 |
| L_45 (75) av | 92 |
| L_45 (85) av | 127 |

Standard: GB/T 29293-2012

C Range: 0 - 360DEG
C Interval: 15.0DEG
Test Speed: HIGH
Temperature:25.3DEG
Operators:Jason Long
Test Date:2019-12-06

γ Range: 0 - 90DEG
 γ Interval: 1.0DEG
Test System:EVERFINE GO-2000B_V1 SYSTEM V2.0.362
Humidity:56%
Test Distance:5.850m [K=1.0000]
Remarks:

Planar Illuminance Curve



C Range: 0 - 360DEG
C Interval: 15.0DEG
Test Speed: HIGH
Temperature: 25.3DEG
Operators: Jason Long
Test Date: 2019-12-06

γ Range: 0 - 90DEG
 γ Interval: 1.0DEG
Test System: EVERFINE GO-2000B_V1 SYSTEM V2.0.362
Humidity: 56%
Test Distance: 5.850m [K=1.0000]
Remarks:

```

γ Range: 0 - 90DEG
γ Interval: 1.0DEG
Test System:EVERFINE GO-2000B_V1 SYSTEM V2.0.362
Humidity:56%
Test Distance:5.850m [K=1.0000]
Remarks:

```

```

γ Range: 0 - 90DEG
γ Interval: 1.0DEG
Test System:EVERFINE GO-2000B_V1 SYSTEM V2.0.362
Humidity:56%
Test Distance:5.850m [K=1.0000]
Remarks:

```